

Quickstart CADnetwork® RenderCube®

Connect the RenderCubes with Power Cord and Network

1



Search the RenderCubes with RenderCube Remote Tool

2

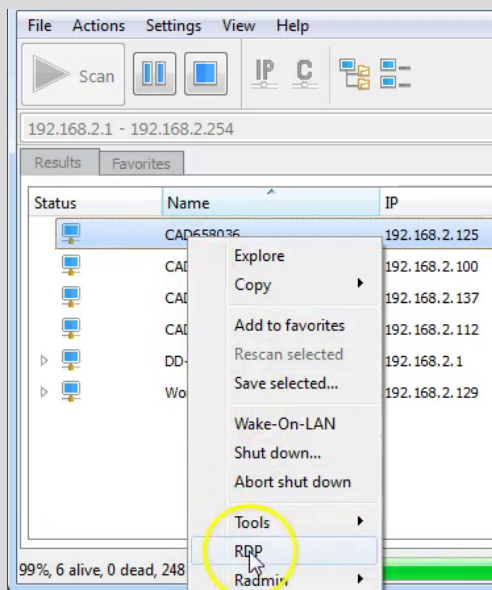


RenderCube Remote.exe



Start the Connection with rightclick on the RenderCube and **RDP**

3



Authentication:

User: **CADuser**

Password: **CADnetwork**

