

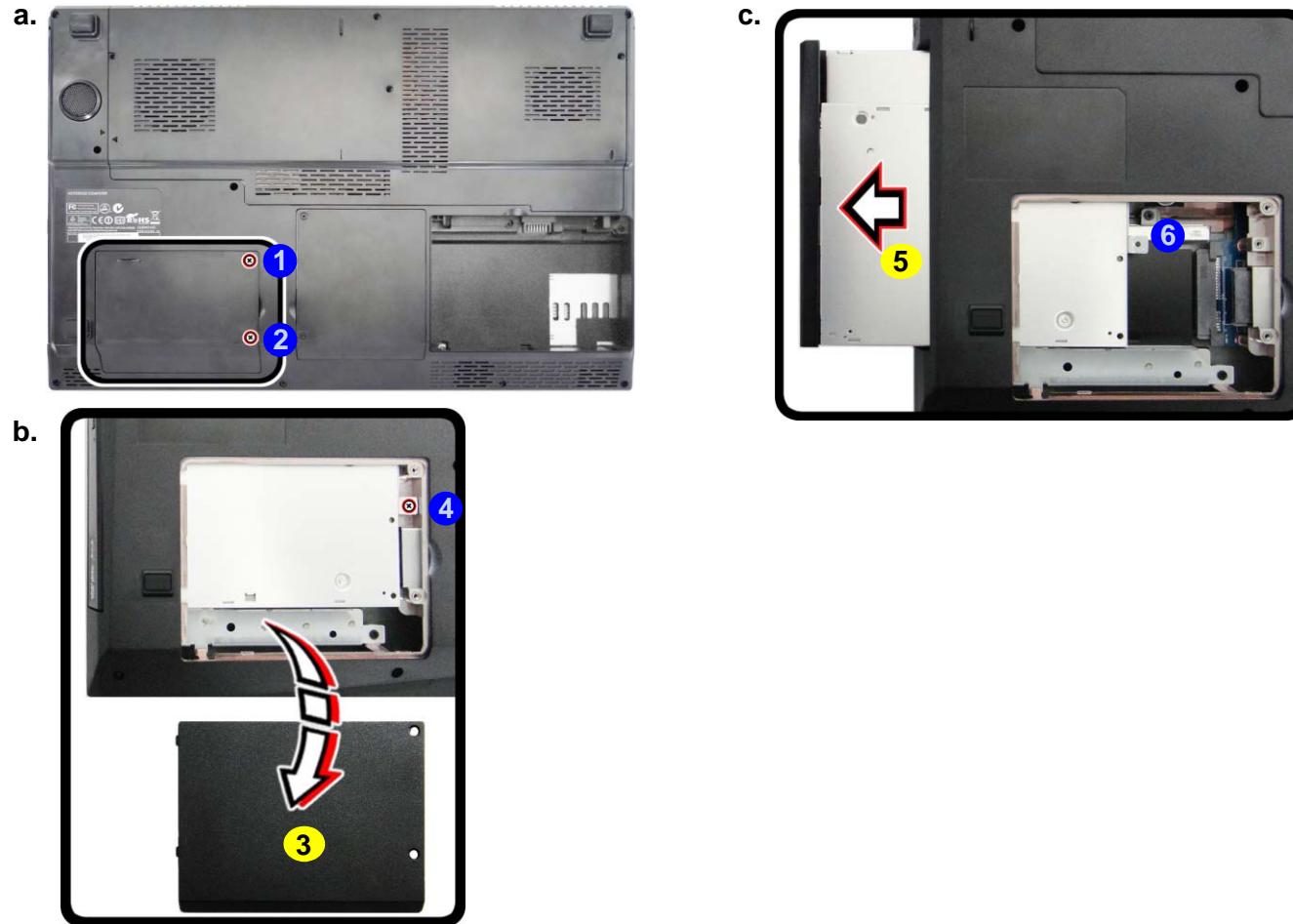
Disassembly

Figure 6
**Optical Device
Removal**

- Locate the secondary hard disk bay cover and remove the screws.
- Remove the cover and screw.
- Push the optical device out off the computer at point 6.

Removing the Optical (CD/DVD) Device

- Turn **off** the computer, and remove the battery ([page 2 - 5](#)).
- Locate the **secondary** hard disk bay cover and remove screws **1** & **2** ([Figure 6a](#)).
- Remove the hard disk bay cover **3** and screw at point **4** ([Figure 6b](#)).
- Use a screwdriver to carefully push out the optical device **5** out of the bay at point **6** ([Figure 6d](#)).
- Reverse the process to install any new optical (CD/DVD) device.

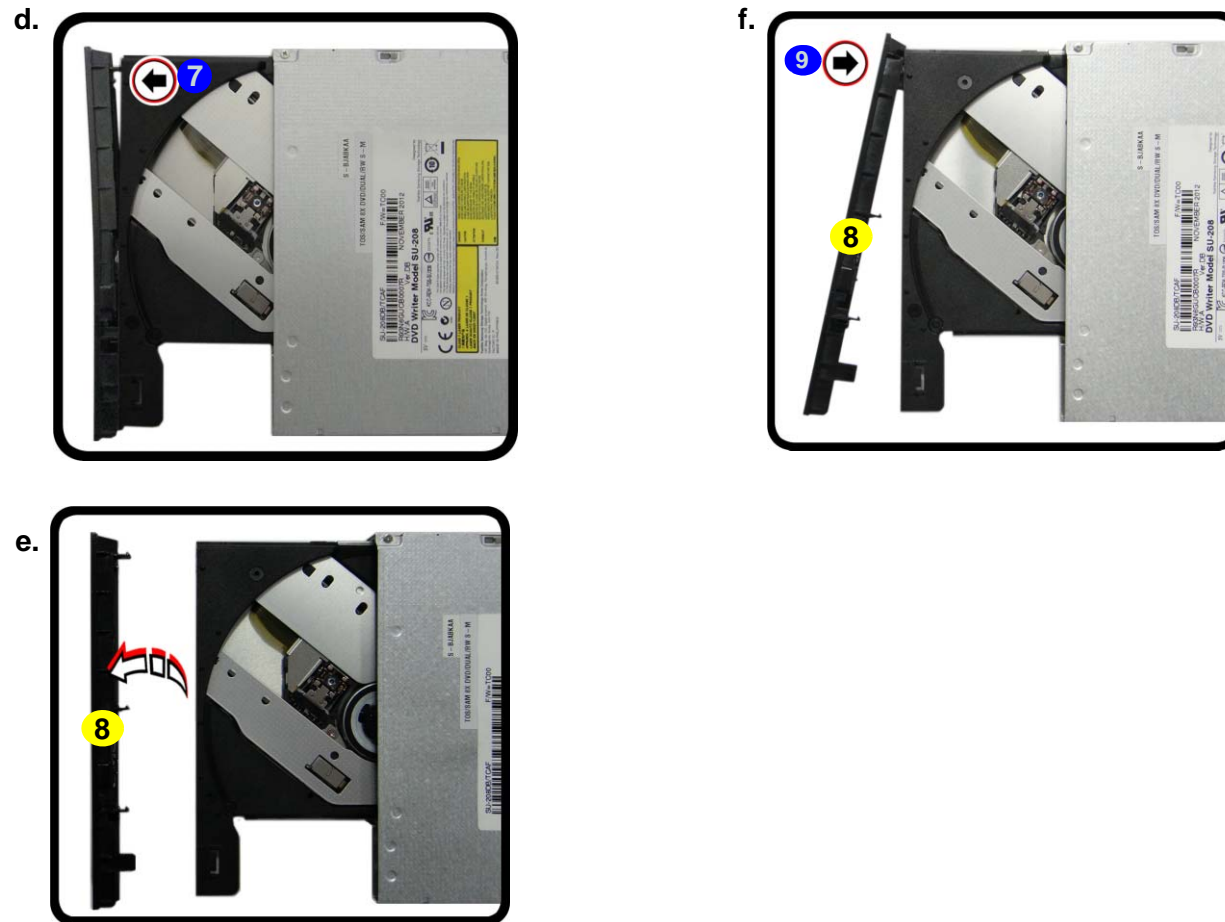


- 3. Secondary HDD Bay Cover
- 5. Optical Device
- 3 Screws

6. Carefully pry the bezel **8** off the optical device at point **7** (*Figure 7d*).
7. Separate the bezel **8** and the optical device.
8. Reverse the process to attach the front bezel **8** with the new optical device at point **9** (*Figure 7f*).
9. Insert the new device and carefully slide it into the computer (the device only fits one way. DO NOT FORCE IT; The screw holes should line up).
10. Replace the component bay cover and tighten the screws.
11. Restart the computer to allow it to automatically detect the new device.

Figure 7
**Optical Device
Removal (cont'd.)**

- d. Pry the bezel off the optical device.
- e. Separate the bezel and optical device
- f. Install the front bezel.



8. Bezel Cover

- 1 Screw

Disassembly

Figure 8
**Secondary HDD
 Assembly Removal**

- a. Remove the screws from the secondary HDD assembly.
- b. Slide the secondary HDD assembly in the direction of the arrow.
- c. Lift the secondary HDD assembly up and out of the bay.

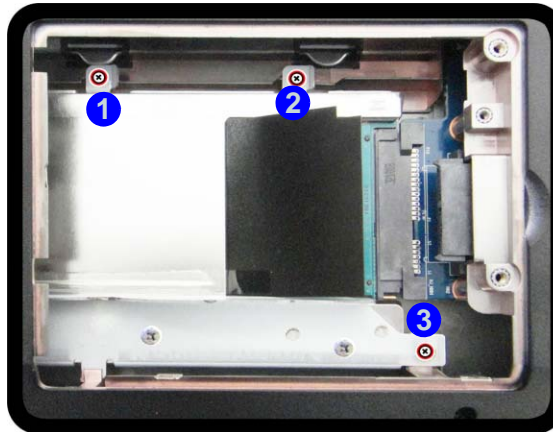
5. Hard Disk Assembly
- 3 Screws

Removing the Hard Disk from the Secondary HDD Bay

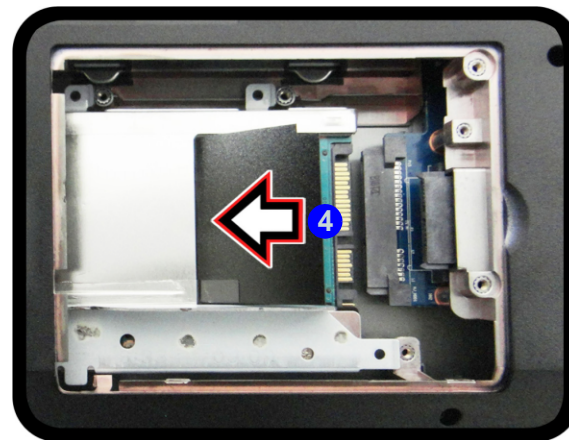
Note that the **secondary** hard disk (if installed) is located under the optical device bay (CD/DVD).

1. Turn **off** the computer, and turn it over, remove the battery ([page 2 - 5](#)) and optical device ([page 2 - 10](#)).
2. Remove screws ① - ③ from the secondary HDD assembly ([Figure 8a](#)).
3. Slide the secondary HDD assembly in the direction of the arrow ④ (it will not move fully out of the bay [Figure 8a](#)).
4. Lift the secondary HDD assembly ⑤ up and out of the bay (in the reverse direction of the arrow ④ [Figure 8c](#)).

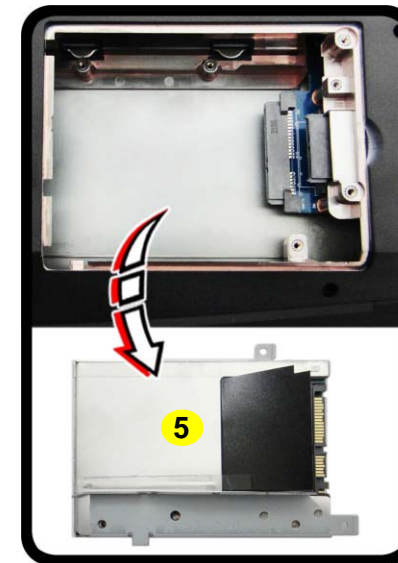
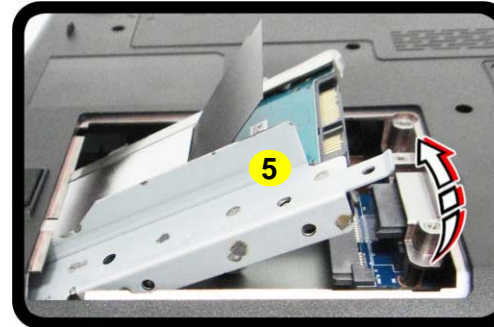
a.



b.



c.



5. Remove screws ⑥ - ⑨ and the insulation plate ⑩ from the hard disk ⑪ (*Figure 9d*).

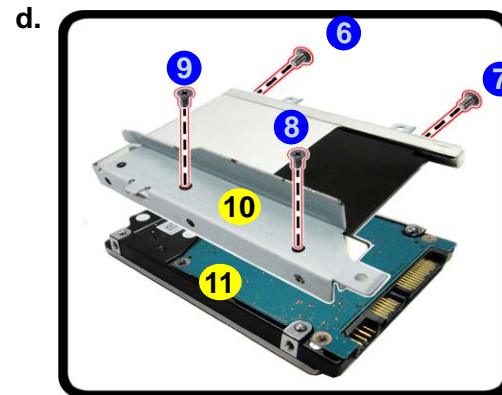
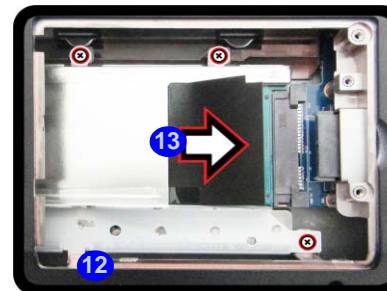


Figure 9
**Secondary HDD
Assembly Removal**

- d. Remove the screws and the insulation plate.

6. Reverse the process to install a new disk (make sure you install the insulation plate).
7. Slide the HDD assembly into the bay at an angle as illustrated.
8. Make sure the insulation plate slides under the HDD bay guide at point ⑫.
9. Slide the assembly in the direction of the arrow ⑬ and secure the assembly with the screws.



- ⑩. HDD Insulation Plate
- ⑪. HDD
- 4 Screws